

Installation Instructions

BRIGHT/SUPREME/DURABLE PLUS

Storage & Handling

Storage

1. When storing products, maintain an appropriate temperature of between 10 degrees C and 35 degrees C. Rolls should be stored in an upright position. Careful attention should be paid to the possibility of rolls falling down. Secure completely to prevent accidents.
2. Do not expose products to direct sunlight and/or moisture.

Handling

These rolls are heavy! Use a forklift for movement or loading/unloading. If necessary, two people should move the product in order to avoid physical injury or damage. When moving products with a forklift, make sure that product is not damaged by the forks

Installation

Preparation Before Installing

1. Remove existing floor coverings ensuring attention is paid to any site, local, state or federal regulations and/or manufacturer's instructions.
2. Moisture testing should be conducted in accordance with AS1884:2012.
3. Ensure the subfloor is clean. Remove all traces of dust, stains, paint, oil, grease, asphalt, varnish, wax, adhesive, and other contaminants.
4. Any cracks, grooves, holes and depressions should be levelled using a cementitious levelling agent.

Precautions

1. Flooring materials and adhesives ideally should be maintained at a temperature between 20°C and 30°C for at least 48 hours before and after installation.
2. Be sure to store flooring materials upright. Do not lay flooring down for extended periods of time.
3. When sheet flooring materials have been stored at cold temperatures, it is necessary to open the sheet flooring, roll out overnight for conditioning before installation.

Identification of Product & Rough Cutting

1. If installation requires more than one roll of flooring product, be sure to select those with successive roll numbers with the same lot number.
2. Examine the installation site to determine the number of rolls for installation required. Be sure to avoid placing seams in any entrance ways.
3. Rough cut the flooring and allow it to be sufficiently conditioned to the working environment.

Note: Subfloor preparation and installation must be carried out in accordance with AS1884:2012. These instructions are not intended to replace this standard.

Primary Installation

Primary installation according to the Knife Cutting Method or Scribe Cutting Method.

KNIFE CUTTING METHOD

1. Spread sheet flooring products over subfloor. (See Fig.1)
2. Portions along the wall surface and edge should be sufficiently adhered to the surface and cut in a 'V' shape from the corner. Next, cut flooring to be slightly longer according to the shape of the walls. (See Fig. 2)



Fig.1

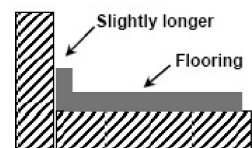
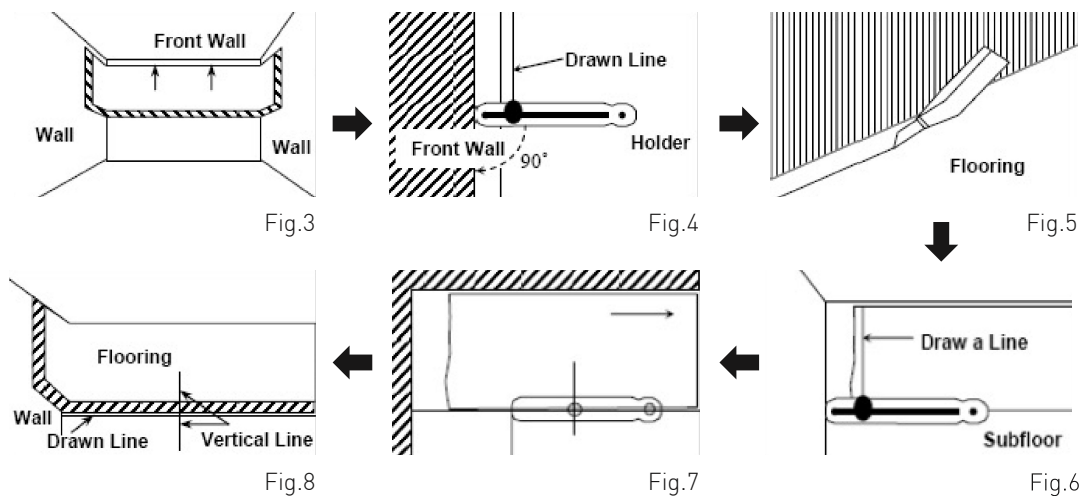


Fig.2

SCRIBE CUTTING METHOD

1. Spread sheet flooring products over the subfloor.
2. Place ends of sheet flooring up the wall surface slightly and spread balance over subfloor with certain distance from the front wall (about 4 inches). (See Fig. 3)
3. Point a scribing tool toward the front wall and slowly move at a right angle to the flooring. (See Fig. 4)
4. Use a hook-shaped knife to cut the flooring along the line that has been marked by the Scribing Tool. Use knife at a slant to cut more back side than the surface. Finally, set the flooring toward the front wall. (See Fig. 5)
5. In order to cut the flooring at both wall sides, draw a line along the edge with a chalk and mark "+ line" on the subfloor and the flooring as shown in figure. (See Fig. 6)
6. Move and spread the flooring until one edge of the flooring rising up the wall. (See Fig. 7)
7. Accurately measure the distances of the line at a right angle to the subfloor and the line on the flooring moved. (See Fig. 7) Draw a line on the sheet flooring with a scribing tool along the wall where the flooring goes down to the subfloor. (See Fig. 8)
8. Cut the flooring along the drawn line with the hook-shaped knife and set the flooring toward the wall.
9. Cut the flooring rising up the opposite wall according to the same method.



Adhesive Application

Kenbrock recommends the use of Kenbrock Hardgrip adhesive to install the Durable, Supreme, Bright and Multi ranges of Sheet Vinyl.

Hardgrip should be spread evenly using a "V1" notched spreader with notches 1.6mm deep x 1.6mm wide x 1.6mm spacing. Apply over an area that can be covered within the open time of the adhesive. This open time will vary according to the prevailing site conditions including temperature, humidity and air flow. The adhesive manufacturer's instructions regarding open time and initial tack off times should be followed.

Allow the adhesive to gain some initial tack which will be generally be around 10 to 15 minutes. The sheet vinyl should be placed into wet adhesive film which will allow transfer to the backing and the trowel marks to flatten when rolled.

1. While preventing movement of the flooring sheets, turn up at least half of the sheet as shown.
2. Snap a chalk line along the flooring folded part, which plays a role of guide for installation of the second half.
3. Apply the specified adhesive and spread with the specified trowel. (See Fig. 9)

4. When the adhesive has full adhesive strength, carefully lay the flooring products while not leaving any air bubbles. Rolling with a 45kg (100 lb) or more 3-section roller is recommended. This rolling process removes air bubbles and contributes to complete bonding. If necessary, use a hand roller for corners.
5. After adhesion of the first half, repeat the same procedures for the remaining half.

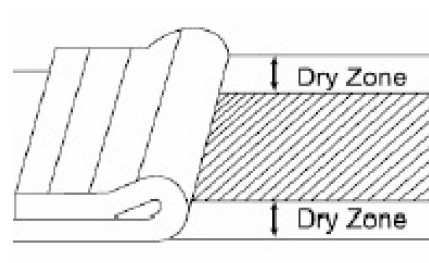


Fig.9

Installation of Second and Remaining Rolls

1. Spread the second roll of flooring product over the subfloor while appropriately overlapping the embossed line on the initially installed flooring's edge and the embossing line on the second edge.
2. Conduct wall-side cutting according to the previously described procedures.
3. Apply the adhesive.
4. Install the other flooring sheets according to steps 2 and 3.

Note : In spite of constant manufacturing process, colour difference within different batches is possible. To avoid differences in designs and colours, Use only one batch for one single room.

For all sheet- type product, the reverse installation is strongly recommended to get best appearance, especially for products with solid pattern.

Seams

1. Seams should be recess scribed for best results.
2. Apply the adhesive with the specified trowel. When the adhesive has reached appropriate tack level carefully lay the sheet flooring.
3. Roll sheet flooring with a 3- section roller. Use a hand roller for seams and then, wipe any adhesive residue off of the seams.
4. Continue the installation according to the same method.

Note : For Multi, the edges don't have to be cut during installation, since they come out vertically and neatly at the stage of production.

So, be sure not to overlap the first roll when installing the second roll of Multi, but to stick two rolls directly side by side.

Welding

For seam connection, two methods are applicable – Heat Welding and Cold Welding (Chemical Welding).

CHEMICAL WELDING

1st step : Side Welding

1. Thoroughly shake the chemical seam sealer for proper mixing.
2. Fold one half of the layer at the seam. (See Fig.10)
3. Apply chemical weld on the product at the seam. Clean up the excessive Chemical Welding Solution immediately using dry towel dampened with mineral spirits or denatured alcohol.

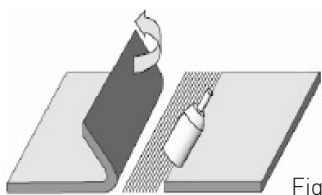


Fig.10

2nd step : Surface Welding

1. Insert the tip of the welding applicator in the seam. Pull with steady pressure. (See Fig.11)
2. Clean up the excessive using dry towel within 30 seconds after seam welding.

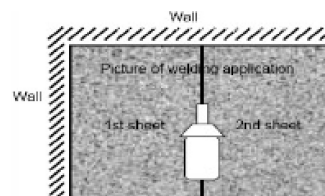


Fig.11

Caution : Chemical welding solution left on sheet flooring for more than 30 seconds will damage the surface of the material.

HEAT WELDING

1. Prior to heat welding, the adhesive applied should be completely cured. Wait at least 24 hours.
2. Supply the power to the heat welding gun and heat it to 220°C. Temperature is very important in heat welding. Too hot or too slow may result in burning or melting the flooring surface.
3. Using a floor router, determine appropriate blade depth after trials with scrap material. Adjust the machine to have a groove approximately 2/3 depth of material.

4. Using a floor router, make a groove 2/3 in depth relative to the flooring's thickness along the seam line. Stop the router several centimetre from the wall and use a hand grooving tool to make the groove from that point to the wall.
5. Feed the welding rod into the welding gun nozzle. (In advance, practice welding work with use of scraps as in step 3).
6. Proceed welding at a constant rate.

7. As the gun approaches the wall, change the direction and continue welding.
8. Cut the protruding portion of welding rod to be flush with the sheets before rod cools down.
9. For other sheets, conduct heat welding according to the above procedures.

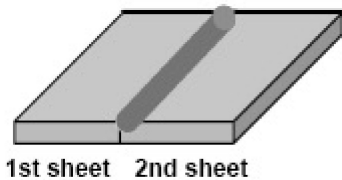


Fig.12

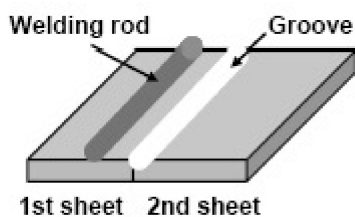


Fig.13

Finishing & Miscellaneous

1. Sweep the floor.
2. Remove all trash and scraps.
3. Wait 48 hours after installation before cleaning the floor. Remove any stained materials with a damp mop.
4. Move furniture or other objects into the newly installed area 48 hours after installation. Use the hard board or cart to prevent any damage to the flooring.
5. For heavy furniture or objects, use the pad to prevent any damage to the flooring.