

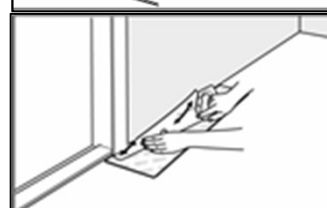
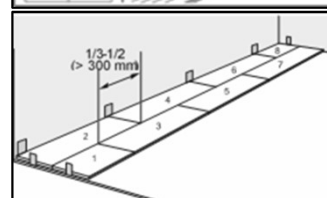
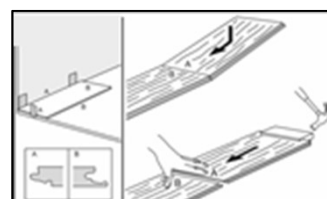
Installation Instructions – Click Type Laminate Flooring (Side Tap)

Please read these Installation Instructions in full before proceeding with the installation.

Please leave a copy of these Installation Instructions, and a copy of the Cleaning & Care and Maintenance Instructions, for home owner/tenant.

Airstep Flooring recommend installation is carried out by a professional flooring installer. The Installation Instructions form part of the warranty for the product.

1. Check the Installation Instructions and cross-reference with the instructions at airstepflooring.com.au
2. Check the products details on packaging is correct with what you ordered. Once the packaging is opened return of stock will not be accepted. Flooring planks must be checked carefully for material defects under optimal light conditions before and during installation. Products with visible defects must not be installed under any circumstances. Installation implies acceptance of the product warranty.
3. The unopened packs must be acclimatised in the room where the floor is to be installed for 48 hours at a temperature between 18-27°C and a relative humidity between 30-75%. This temperature and humidity is to be maintained at the same range during installation and for 48 hours post installation.
4. The subfloor must be solid, clean, dry, flat and level. A moisture barrier must be installed.
(These are the single most important steps to a good installation and great performing floor).
5. If skirting boards are on, you will need to install a scotia at the end of the job.
6. Install the underlay supplied by Airstep Flooring, and tape the joins.
7. Laminate floating floors are normally installed along the long walls.
8. Plan your installation. Refer note 15 below; which may necessitate trimming the first row.
9. Start in the left corner, install the first row. Leave an expansion gap at the ends and sides of 10-12mm. Install the boards randomly from several packs.
10. Always tap the joins with a tapping block – this is important to ensure the joints are completely locked and that tension between the boards is released.
11. Install the second row with the off-cut of the first row. It must be >300mm and not be closer than 300mm from the join in the first row. Tap the joins with a tapping block.
12. Place wedges to protect the expansion gap around the room as you lay the floor.
13. Continue to lay the floor. Tap the joins with a tapping block.
14. At doorways, undercut the architrave with an undercutting saw.
15. The final row must be a minimum of 40mm in width.
16. Use a tapping block and hook to install tight areas such as the last row.
17. Expansion joins are required at doorways and for rooms exceeding 13m x 13m.
18. Remove spacers from around the room and install skirting boards, or scotia available from Airstep Flooring if skirts are already installed.



PLEASE NOTE:

1. More than 90% of problems with floors relate to moisture. Ensure that the moisture barrier is properly installed and taped. Ensure spills on the floor are dealt with quickly. Use dry/damp mopping methods only (dry/damp mop means the floor is



Eucalyptus Steps



March 2017, V.1.

dry 15 seconds after mopping).

2. Your flooring may oxidise, or turn darker in the presence of UV light. This is a naturally occurring process.
3. Insufficient expansion gaps cause the floor to buckle/peak/cup/separate.
4. Insufficient expansion gaps at doorways cause the floor to buckle/peak/cup/separate.
5. Uneven subfloor causes the floor to sound 'drummy' and will cause early deterioration of the boards.
6. Cleaning & Care and Maintenance Instructions must be followed to maintain the products warranty.

Lamination!