

ARC BAMBOO

INSTALLATION INSTRUCTIONS ARC BAMBOO

For best results, it is essential that you follow the installation instructions exactly.

IN GENERAL

Arc Bamboo is a “solid” re-constituted strand woven bamboo floor. The installation of this product generally follows the normal practice for the installation of floating floors, however due to its solid construction, it is not as dimensionally stable as engineered or multi-layer flooring products. This means that it is quite reactive in the width to changes in humidity, and is somewhat un-reactive in the length. As such, special attention should be given to adequate perimeter gaps, and proper compartmentalisation of the floor plan. This involves the provision of control joints at doorways to break up the floor plan into separate floors, and by doing so reduce the overall expansion or contraction of the floor. 10 or 12mm skirting boards are not suitable, as they do not provide adequate cover for the perimeter gap. Always lay the product down the length of the room to minimise the running LM in the width. And finally, always ensure that the floor does not exceed 8LM in the width, before a control joint is provided.

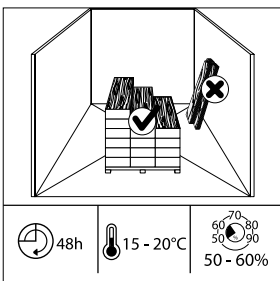
Bamboo flooring is a beautiful and unique product of nature, which is characterized by distinctive variations in grain and colour. These natural variations in colour and grain are not flaws, but are a part of the natural beauty and uniqueness of Bamboo flooring. These inherent variations should be expected and serve to enhance the natural beauty and enduring charm. Arc Bamboo is manufactured in accordance with accepted industry standards, which permit a defect tolerance not to exceed 5%. **The defects may be of a manufacturing or natural type.**

- The installer assumes all responsibility for final inspection of product quality. This inspection of the whole flooring should be done before installation. Carefully examine the flooring for colour, finish and quality before installing it. Use reasonable selectivity and hold out or cut off pieces with glaring defects whatever the cause. If the flooring is not acceptable, contact your dealer immediately.
- Before beginning installation of any Bamboo flooring product, the installer must determine that the environment of the job site and the condition and type of the subfloor involved are acceptable, ensuring that it meets or exceeds all requirements which are stipulated in the Arc Bamboo installation instructions which follow. Premium Floors declines any responsibility for job failures resulting from or associated with incorrect installation or maintenance.
- Prior to installation, the installer/owner has final inspection responsibility as to grade, manufacture and factory finish. The installer must use reasonable selectivity and hold out or cut off pieces with deficiencies.
- The use of stain, filler or putty stick for the correction of defects during installation should be accepted as normal procedure.
- Should an individual piece be doubtful as to grade, manufacture or factory finish, the installer should not use the piece.
- When ARC Bamboo Uniclic is ordered, a minimum 5% allowance factor, depending on layout, must be added to the actual square meterage amount needed. (Diagonal installations and/or board width of 5” and over may require up to a 10% allowance factor.)
- Please note that ARC Bamboo Uniclic engineered floors must be installed in a regulated and liveable environment to prevent possible damage not covered by warranty. As such, Arc Bamboo should not be installed more than two weeks prior to occupation of the home. **The floor is designed to perform in an environmentally controlled structure.**
- Warranty exclusions are, but not limited to, surface checking resulting from low or high humidity, mildew or discolouration from extreme sub-floor moisture.

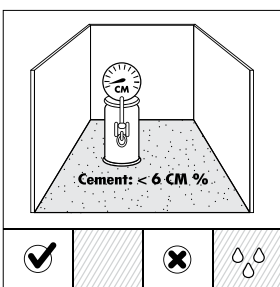
JOB SITE INSPECTION & ACCLIMATION

- This type of flooring can be installed below, equal or above ground level. Do not install in a bathroom.
- In a new construction, Bamboo flooring should be one of the last items installed. All work involving water or moisture (plumbing, acoustical ceiling, wall lining etc) should be completed prior to Bamboo flooring being installed. Heating and air systems should be fully operating maintaining a comfortable room temperature.
- Flooring should not be delivered until the building has been closed in and cement work, plastering, painting and other materials are completely dry. Concrete and plaster should be cured and at least 60 days old. Check basements and underfloor crawl space to be sure that they are dry and well ventilated to avoid damage caused by moisture.
- Handle with care. Do not stand on ends. Store ARC Bamboo Uniclic in a dry place being sure to provide at least a four-inch air space under and around cartons.
- Do not store directly on concrete or near outside walls. Cartons should be placed in the installation area.
- Extremes in humidity levels in the home must be prevented all year long. Bamboo is a living product which reacts to humidity level variations. During summer, where the humidity level is at its highest point, the Bamboo has a natural expansion and absorbs the humidity, these variations must be dealt with adequate dehumidification.
- As for winter, when the heating system is working, the humidity level can become too low. This is especially the case with wood fired heating, but can occur with any heating system. It is also more common in inland, southern Australia or a place such as central Otago in New Zealand where humidity is already lower. When humidity becomes too low, strand woven Bamboo has a tendency to cup and shrink, causing some corrugation across the boards. As such, steps must be taken to introduce moisture into the indoor environment, eg plants, water features, fish bowls, humidifier, etc. Failure to adopt such measures may lead to irreversible cupping of the boards, this is not covered by warranty.

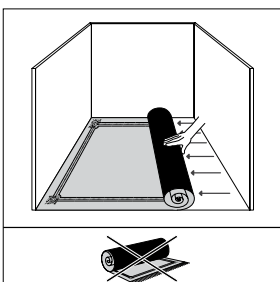
PREPARATION



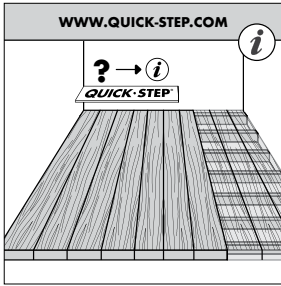
Let the planks acclimatize for 48 hours in the unopened packaging at the normal room temperature, in the middle of the room where the floor is to be installed. The ideal conditions are 15-20°C (59-68°F) at a relative humidity of 50-60%.



Fresh screed must dry for at least 1 week per cm thickness up to 4 cm and 2 weeks per cm thickness over 4 cm, with sufficient ventilation. For example, a 6 cm screed must dry for at least 8 weeks. For the thickness over 6 cm you must add 3 to 4 weeks. The moisture content must be less than 6% when tested with an electric resistance meter.



Remove any damp-open floor covering (carpet, needle felt, etc.) first. Damp-proof floor covering (PVC, linoleum, etc.) does not have to be removed. Always use an underlay. We recommend the use of Quick-Step Combilay or Quiet-Step Combilay.



WOODEN SUBFLOOR:

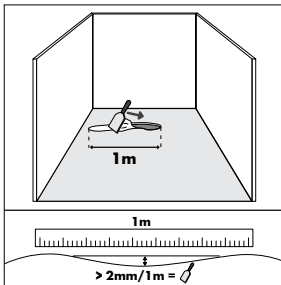
Remove any existing floor covering first.

No signs of mould and/or insect infestations should be present.

Make sure the subfloor is level. Nail down any loose parts.

The crawl space under the plank floor must be sufficiently ventilated. Remove any obstacles and make sure there is sufficient ventilation (minimum 4 cm² total ventilation openings per m² of floor). The moisture content of the wood must not exceed 12%.

Make sure the floor base is flat, clean, firm and dry.

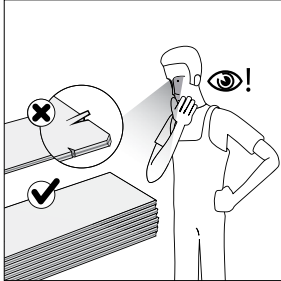


The first thing that you need is to ensure that the subfloor or surface that the Bamboo is being installed over is level. Using a 1 metre straightedge, the subfloor level should not exceed +/- 2mm over 1 lineal metre in any direction. Remember, uneven floors may lead to movement and noise, so it is necessary to assess the levelness and get it right. Timber floors can be sanded level and concrete floors or existing floor coverings can usually be levelled using a self-levelling compound. Arc Bamboo cannot be installed over carpet or carpet underlay but can be installed over well bonded vinyl, cork, ceramic tiles if sufficiently level.

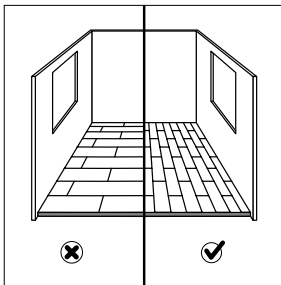
Check whether the old skirting-board can be removed.

Check that the doors can still open and close after the floor and underlay have been installed (minimum + 1 cm).

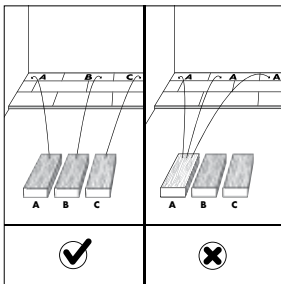
FOCUS POINTS



Inspect all planks in sufficient light before and during installation. Planks with visible defects must never be used. Proceed with a visual inspection of the strips before installation. **Once installed, the strips are considered accepted by the installer and owner.**



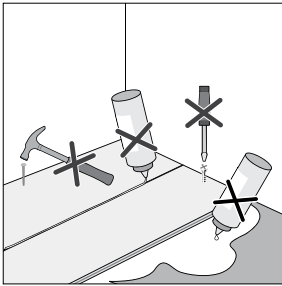
Always lay the product down the length of the room to minimise the running LM in the width.



Make sure the panels are mixed sufficiently when you install them, so that you do not end up with too many identical, light or dark panels next to each other.

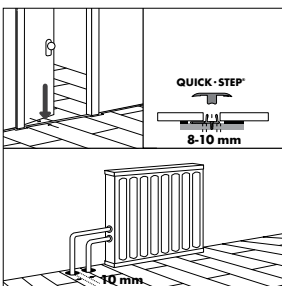
Uniclic® is a revolutionary system for installing floating floors without using glue. The panels can be clicked together easily thanks to the ingenious shape of the tongue and groove.

Arc Bamboo must be installed over a continuous damp proof membrane when installed over concrete subfloors or timber subfloors. This continuous damp proof membrane can be provided by 200uM builders plastic, overlapped 300mm at the joins and taped with a vapour tight tape or by the use of Quick-Step Combi-Lay or Premium Quiet Step Combi-Lay.



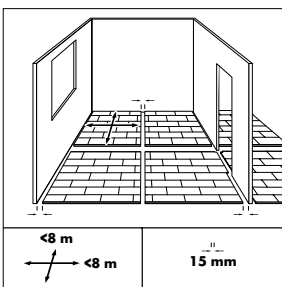
Combi-Lay underlays are manufactured with a plastic damp proof membrane on one side and are conveniently fitted with a 100mm overlap and peel and stick tape. Combi-Lay is rolled out along the starting wall with the plastic down, peel & stick side to the wall. Additional rows are rolled out with tape down over the extended clear overlap. The wax tape can then be peeled away forming the continuous damp proof. Cut ends must be taped with a water proof tape.

In the instance of knowingly or logically wet subfloors, always use 200uM builders plastic sheeting, overlapping joints by 300mm, taping joints with waterproof tape and turning up at walls or vertical fixtures.



Bamboo is the main component of this floor. Because room humidity can vary – for example, between summer and winter – it is vital that the floor is able to expand and contract. That's why you must leave an expansion joint on all sides of the floor of minimum 8 to 10 mm, also around pipes, under doors and at doorsteps. Remember that the floor may move in one direction.

In any case, make sure there is an expansion joint between different rooms (under doors, for example). These expansion joints are covered with a profile attached to the subfloor.



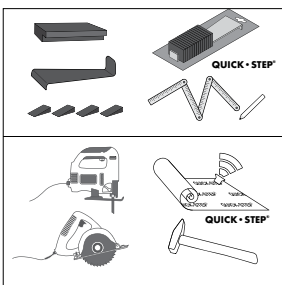
In terms of the required expansion gap, a minimum of 10mm is required in lower relative humidity environments like Melbourne, Hobart or Southern New Zealand. A 14mm gap is required in areas of higher relative humidity like Northern New South Wales, Queensland or Napier.

Arc Bamboo may grow or contract more than 2mm per LM in the width, so make sure you leave enough gap to allow for such expansion or contraction. The wider the floor, the bigger the gap that may be required.

Large multi room installations should be separated at doorways. This gap is then covered with a cover profile. This is called compartmentalisation. Consult your retailer or contractor if you are unsure about the required location.

Uniclic® panels are not suitable for use in damp spaces like bathrooms and saunas.

INSTALLATION



In addition to the standard tools (such as a hammer, saw, pencil, tape measure) for laying wooden floors, you will need the following accessories:

- installation kit (crowbar, spacers and special tapping block suitable for Uniclic®)
- underlay system
- maintenance products

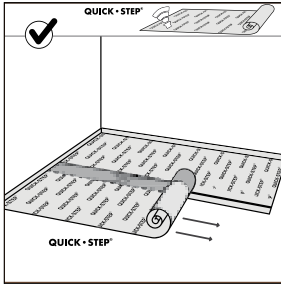
The use of accessories other than Quick•Step® or Premium Floor accessories may cause damage to the floor. In that case the warranty provided by Premium Floors will be void. For this reason we would advise you to use only Quick•Step® or Premium Floors accessories, which have been specially designed and tested for use with our floor panels and maintenance products.

You can choose where you want to begin laying. Think about what will be the easiest way to install the floor. We will demonstrate the installation for right-handed people, from left to right. You can work in the other direction if you want.

Uniclic® is unique because you can install the planks in two different ways.

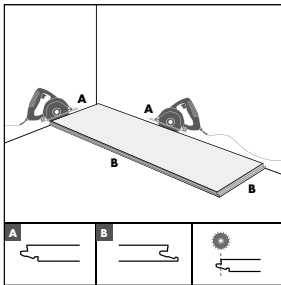
Method A: Position the panel to be installed at an angle of 20 to 30° to the panel already laid. Move the panel gently up and down and at the same time exert forward pressure. The panels will automatically click into place. You can either insert the tongue into the groove, or the groove on to the tongue. The tongue in groove method is the most common and easiest way.

Method B: With Uniclic® you can also tap the panels into each other without lifting. For this method you must use the special Uniclic tapping block. The planks should not be joined with a single tap. To avoid damaging the panels you must tap them together gradually.

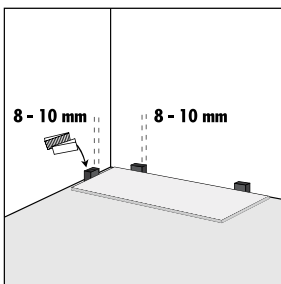


First lay the underlay across the breadth of the room and then gradually as you lay the planks.

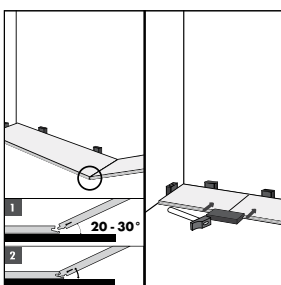
It is vital that you use a levelling underlay to smooth away any unevenness in the floor base. The specially developed Quick • Step® Combi-Lay underlay have a damp-proof, insulating, noise-reducing and levelling function. The level top layer ensures easy laying of the bamboo panels and facilitates ample expansion afterwards. You can find more information about Quick • Step® Combi-Lay underlay and how to use them on the package of your underlay floor or from your dealer.



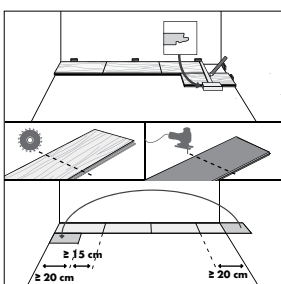
Begin the first row with a whole plank. Saw off both the long and the short tongue from the first panel.



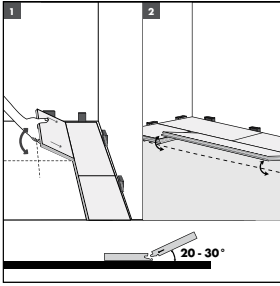
Put the plank with sawn off sides against the walls. Put spacers from the installation kit between the planks and the wall. This will ensure that your expansion joint is wide enough: 8 to 10 mm. Remember, depending on the environment the floor may require more room to expand or contract than the standard 8-10mm.



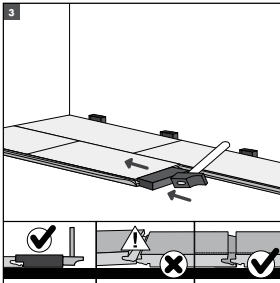
Position the panel to be installed at an angle of 20 to 30° to the panel already laid. Move the panel gently up and down and at the same time exert forward pressure. The panels will automatically click into place. Position the Uniclic tapping block over the short joint between the panels and tap carefully until the panels fully align.



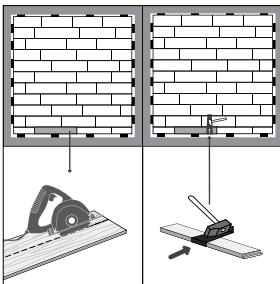
Of course you also need to saw the panels. To obtain a clean cut, the top surface should face down when you use a jigsaw, or circular handsaw and up when you use a handsaw or a crosscut saw. Ensure that the end joints of the panels in two successive rows are never in line. Always ensure that the joints are staggered by at least 15 cm.



Click the first panel of the second row in the previous row. Also click the second panel of the second row in the previous row.

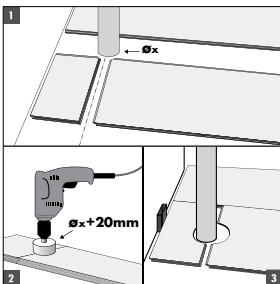


Tap the cross joint between these panels snugly together using the Uniclic tapping block. Make sure both panels are level on the subfloor and that you position the tapping block as indicated in the diagram to avoid damage.

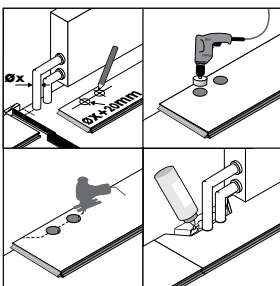


There must also be an 8 to 10 mm expansion joint between the last row and the wall. Keep this in mind when sawing the last row of panels. In places where it is too difficult to install the Uniclic planks with the tapping block (e.g. against the wall), you can tap them together using the crowbar and a hammer.

OBSTACLES

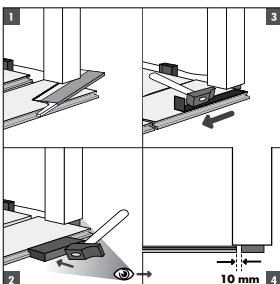


In rows where there is a pipe, make sure the pipe falls exactly in line with the joint between two panels. Take a drill bit with the same diameter as the pipe plus 20 mm. Click the panels together on the short side and drill a hole centred on the joint between the two panels. Now you can install the panels on the floor.



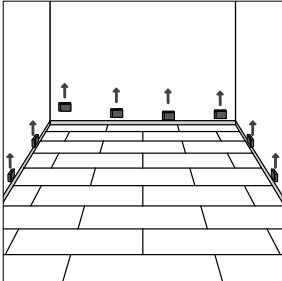
Proceed as follows:

- 1 Measure where the pipe will come through the plank. Don't forget to allow for the expansion joint.
- 2 Take a drill bit measuring the diameter of the pipe plus +20 mm for the expansion. Drill through the panel where the pipe will come through.
- 3 Extend the hole to the edge of the panel.
- 4 Lay the panel around the pipe.
- 5 Take another panel and saw a piece that fits exactly in the remaining hole, and glue this piece with wood glue.

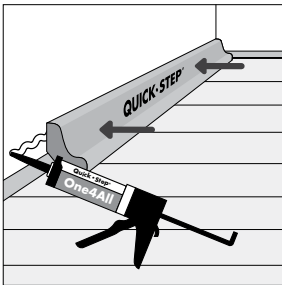


When sawing the panels ensure that the expansion joint under the door is at least 10 mm. If you cannot lift the panel, use an adapted tapping block or crowbar and hammer to tap the panels together.

FINISHING

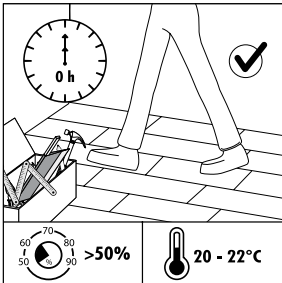


Remove all spacers.

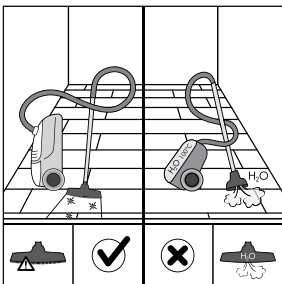


Install the skirting-board. Never attach the skirting-board to the floor. This method allows the floor to expand and contract under the skirting-board. Finally, any gaps at the floor perimeter that could not be covered with skirting or profiles, can be filled with a caulking compound in an appropriate colour.

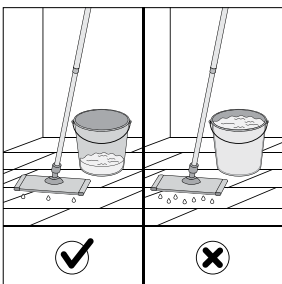
MAINTENANCE



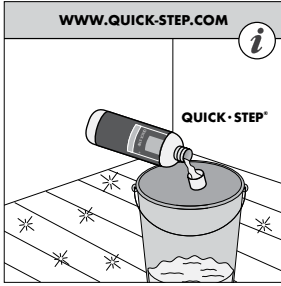
You can walk on the floor during and immediately after installation. Ensure that humidity in the room is always at least 50%. Use a humidifier if necessary.



Dry maintenance is possible with microfibre cloth or with a vacuum cleaner. Make sure it is equipped with soft wheels and a special parquet brush to avoid scratches on your floor. Never use a steam cleaner.

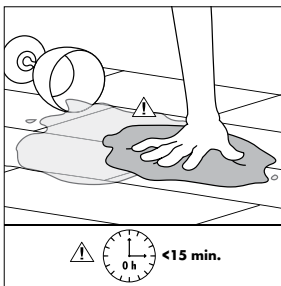


Wet maintenance is absolutely forbidden.

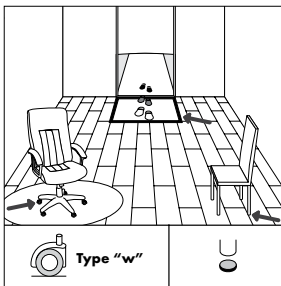


For slightly damp maintenance, we advise Quick•Step® or Premium Floors maintenance products (see instructions provided with these products). Be aware that the use of other cleaning products might damage your floor. Always wipe dry immediately until no more moisture is visible on the floor.

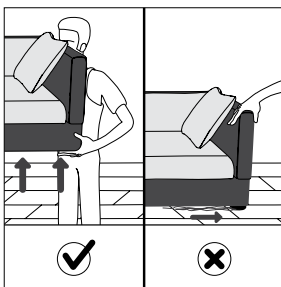
The smooth surface of your bamboo means it never absorbs dirt or dust.
 Never use scouring products or polish.
 Never use wax or varnish on the floor.
 Prevent moisture creeping between the panels and under the floor.



Remove any water immediately.



Protect furniture and chair legs with strong felt caps.
 Avoid bringing dirt, water and sand indoors by providing a suitable floor mat at the door.
 Use (office) chairs and seats with soft casters Type W (EN 12590) that are suitable for a bamboo floor and/or use a suitable desk mat.



Lift furniture and never drag it over the floor.

- Use quality area rugs and doormats by outdoor entrance areas to prevent dirt, sand, grit and other substances such as oil, asphalt or driveway sealer from being tracked onto your floor.
- Maintain a comfortable and regulated indoor environment, in order to minimise the natural expansion and contraction of wood. Failure to prevent extremes in humidity will void the warranty.
- Don't walk on your floor with stiletto-style heels, spiked golf shoes or cleats, they may cause indentations in your floor.
- Rearrange area rugs and furniture periodically so the floor ages evenly. UV sunlight will soften or darken the tone of different species of hardwood to varying degrees.
- Use a dolly when moving heavy furniture or appliances. But first, put down a sheet of Masonite to protect the floor. Never try to slide or roll heavy objects across the floor.
- Pets claws may damage your floor, so keep pet's nails trimmed, or consider "booties" available at pet stores.